



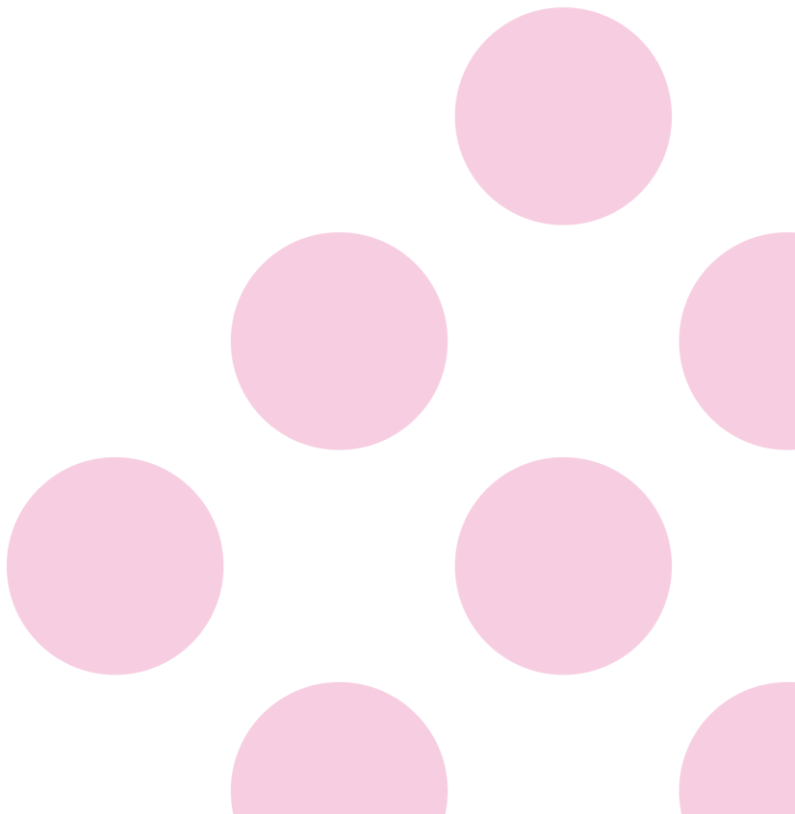
Speakerbus

Service Sunset Notice Speakerbus TDM Voice Connectivity Services

Published Date: April 2024
Reference: EL077

© Speakerbus Group PLC 2024
Registered Office: Hanover House,
Britannia Road, Queens Gate, Waltham Cross,
Hertfordshire, EN8 7TF
Registered in England No: 3330946

speakerbus.com



Product:	Speakerbus Time Division Multiplexed (TDM) Core
End of Service Date:	31 st January 2025
Affected Parts/Variants	Speakerbus TDM Core Network and transport mechanism to the client will be affected. Note: this does NOT affect E1/T1 TDM handoff to client trading platforms.

Declaration

Suppliers of critical services and equipment components to the Speakerbus core network infrastructure are actively either; (i) announcing End of Life Notices for the provision and continued support of TDM circuits and connectivity, or (ii) ending support and maintenance on the TDM hardware equipment. It is for these reasons that Speakerbus is transforming its core network infrastructure from legacy TDM to SIP based technology for the delivery of end-to-end connectivity services.

SIP based technologies will enable Speakerbus to offer equivalent connectivity for existing services provided by Speakerbus, plus offer numerous enhanced feature sets.

Speakerbus shall continue to provide TDM edge connectivity utilising TDM to SIP (and vice versa) gateways.

New Orders

New voice service connections will be provided using our standard SIP voice connection services, regardless of the required edge TDM (E1/T1) interface or MRD/ARD/HOOT line type preferences.

Our Enhanced Network

Speakerbus has a hybrid Cloud/MPLS based global network with latency specifications comparable to TDM transmission times. Our architecture utilises multiple Session Border Controllers (SBCs) that are provisioned as high-availability pairs within multiple regions with multiple alternate routing paths for robustness and resilience.

Where required our SBCs are deployed on a per customer basis with options for both SBC and Cloud vendor management preferences.

Next Steps

Consultations are being initiated with customers using TDM over Ethernet 'last mile' connections as well as those that have pure TDM connectivity. A range of suitable access options and scenarios will be offered.

Your Speakerbus Account Manager will contact you soon to review options available and how Speakerbus intend to assist you with the next steps.

Our website will be updated with more information and a detailed transformation guide will be published. These will contain FAQ's and other critical answers to any questions that may arise.

Alternatively, please contact the Speakerbus Operational Team (customer.support@speakerbus.com).